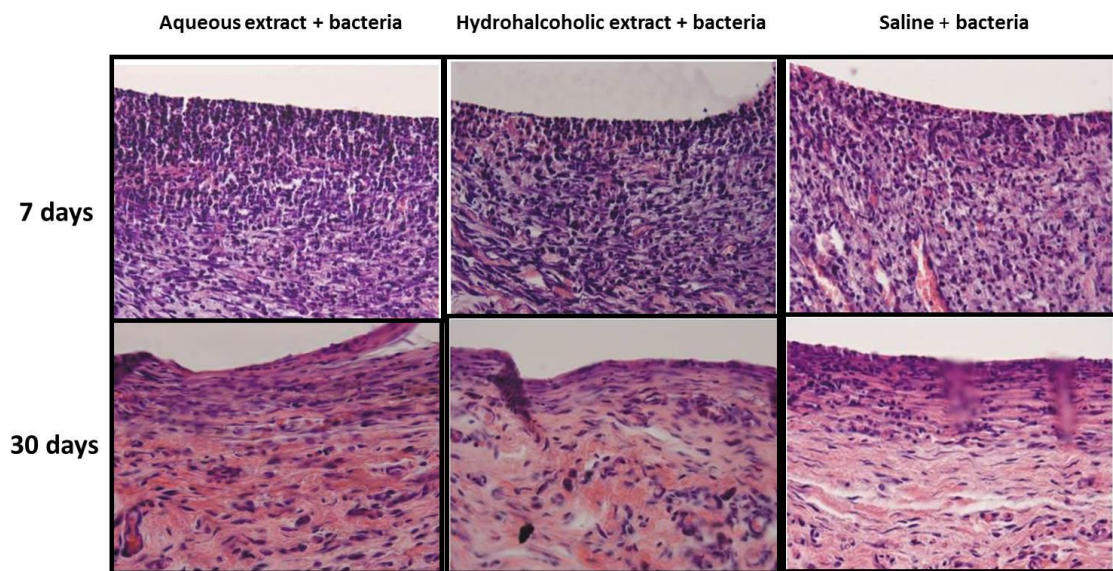


Table 1-Bacterial species used in the suspension prepare:

Bacterial Species	Strain Provenance	Morphotype	Physiology
<i>Porphyromonas gingivalis</i>	ATCC 33277	Gram-Negative	Anaerobic
<i>Peptostreptococcus micros</i>	ATCC 33270	Gram-Positive	Anaerobic
<i>Prevotella intermedia</i>	ATCC 25611	Gram-Negative	Anaerobic
<i>Fusobacterium nucleatum</i> subspecie <i>nucleatum</i>	ATCC 25586	Gram-Negative	Anaerobic
<i>Porphyromonas endodontalis</i>	ATCC 35406	Gram-Negative	Anaerobic
<i>Enterococcus faecalis</i>	ATCC 29212	Gram-Positive	Facultative

Table 2 - Optical density values (mean \pm standard deviation) of edema on both time period and the experimental groups.

Time (Hours)	Groups		
	Aqueous	Hydrohalcoholic	Saline
3	0.353 \pm 0.044	0.732 \pm 0.188	0.388 \pm 0.086
6	0.629 \pm 0.281	0.581 \pm 0.368	0.538 \pm 0.097



Legend Figure

Figure 1: At 7 days: There are inflammatory cells, with macrophage predominance, lymphocytes numerous, few leucocytes and other mononuclear cell, chronic inflammation characteristic in all groups. At

30 days: There is a reduction of inflammatory infiltrate after 30 days. In general for all groups the cell inflammatory agglomerate was substitute to a collagen fiber capsule thin, parallel willing to the implant area. Some fibrocytes presence was identified possibly and some few fibroblasts around collagen fiber. In general the macrophages layer was low profile and the lymphocyte quantity and other mononuclear cells were enough reduced. Blood vessels fewer and less dense in the conjunctive tissue interior has been observed. H.E.. Magnification 40X.